

# CPKC - Installing P6 EPPM Client

This document describes how to install Primavera P6 EPPM Client.

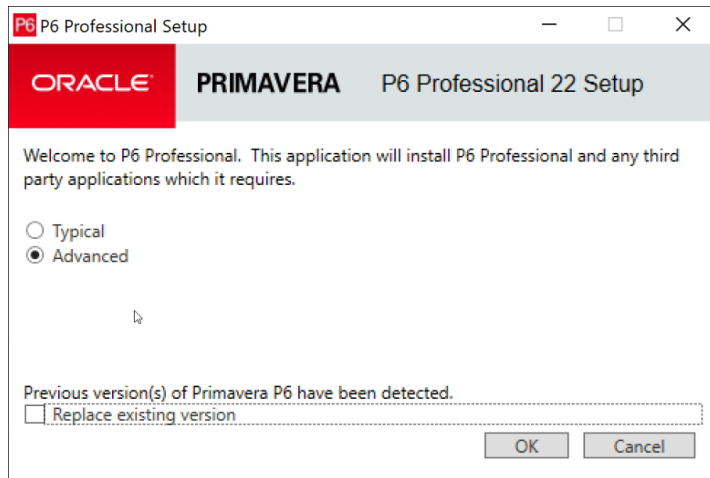
## Downloading

Primavera P6 EPPM Client version 22.12.9 can be download on the URL below.

<https://p6cpkc.emerald-associates.com/P6ProForEPPM-22.12.9.zip>

## Installation

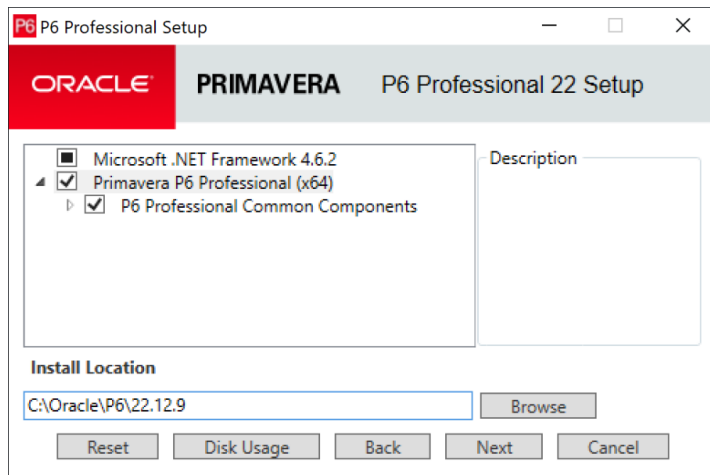
Step-by-step how to go over the Installation procedure.



Select "Advanced" option

Uncheck the box "Replace existing version", if you need to have access to your previous Primavera P6 EPPM Client version.

Click "OK"



Click "Primavera P6 Professional (x64)" label

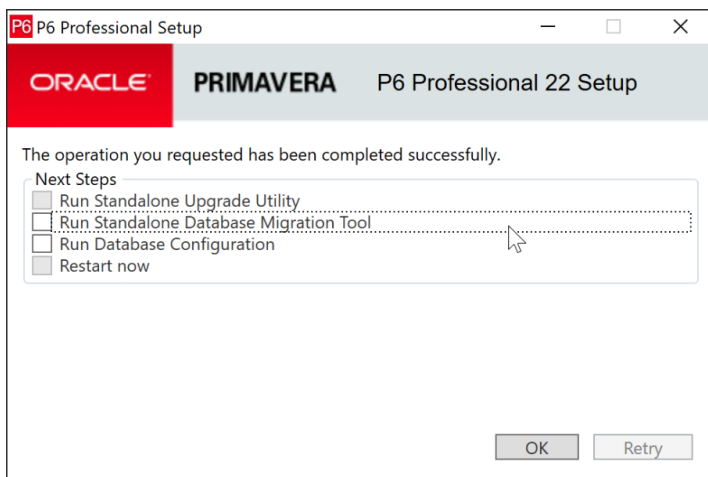
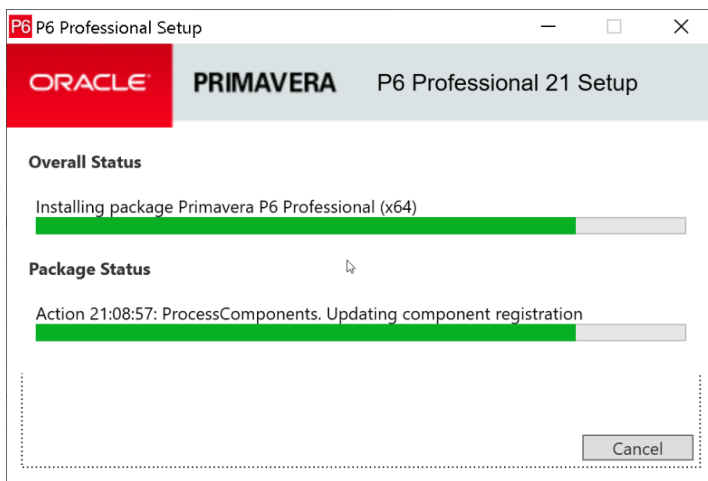
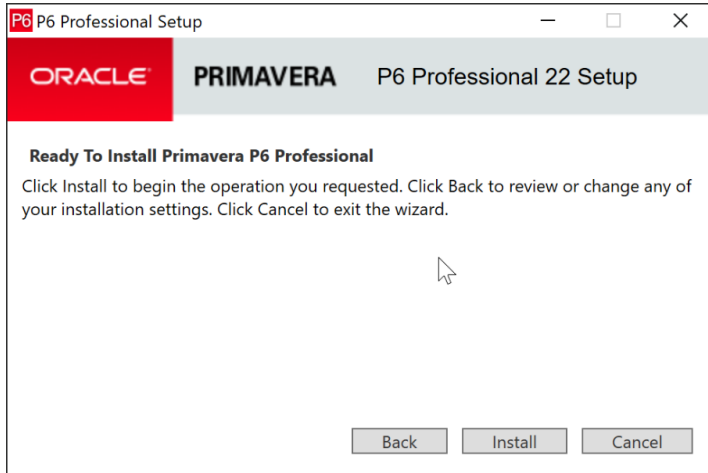
Use the "Install Location" field to define the Primavera P6 EPPM Client installation folder.

The default location would be:

**C:\Oracle\P6\22.12.9**

Click "Next"

Click "Install"



Uncheck all boxes.

Click "OK"

## Database setup

There are two to add the database connections to the Primavera P6 EPPM client

### 1- USING "PRMBOOTSRAPV2.XML"

The file can be download on URL below:

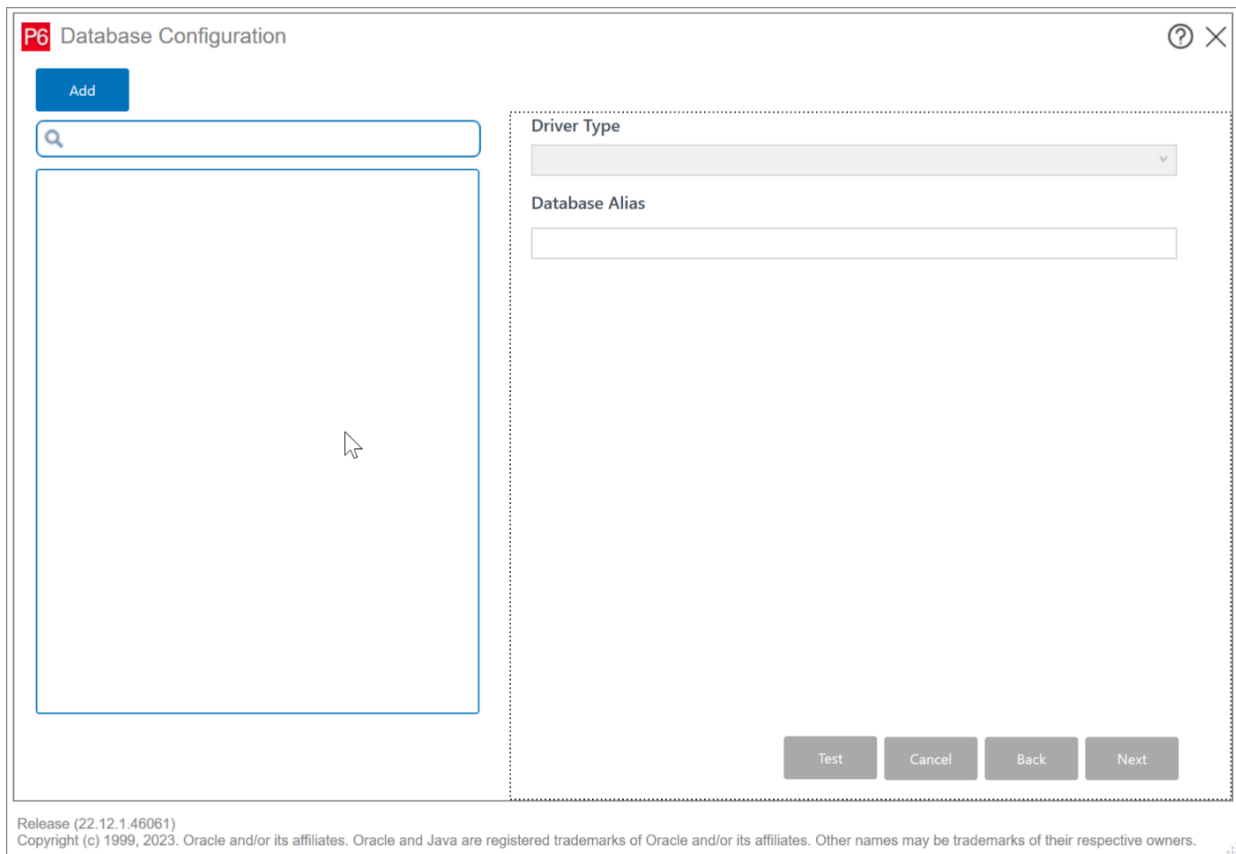
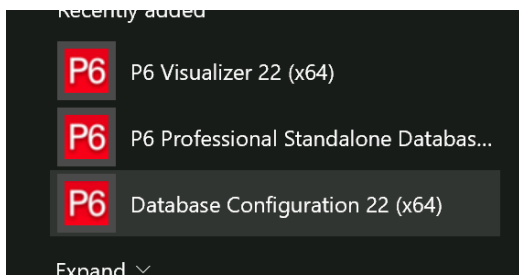
<https://p6cpkc.emerald-associates.com/PRMBootStrapV2.xml>

This file need to be copied into the Primavera P6 client installation folder.

Default folder: **C:\Oracle\P6\22.12.9**

### 2- MANUAL SETUP

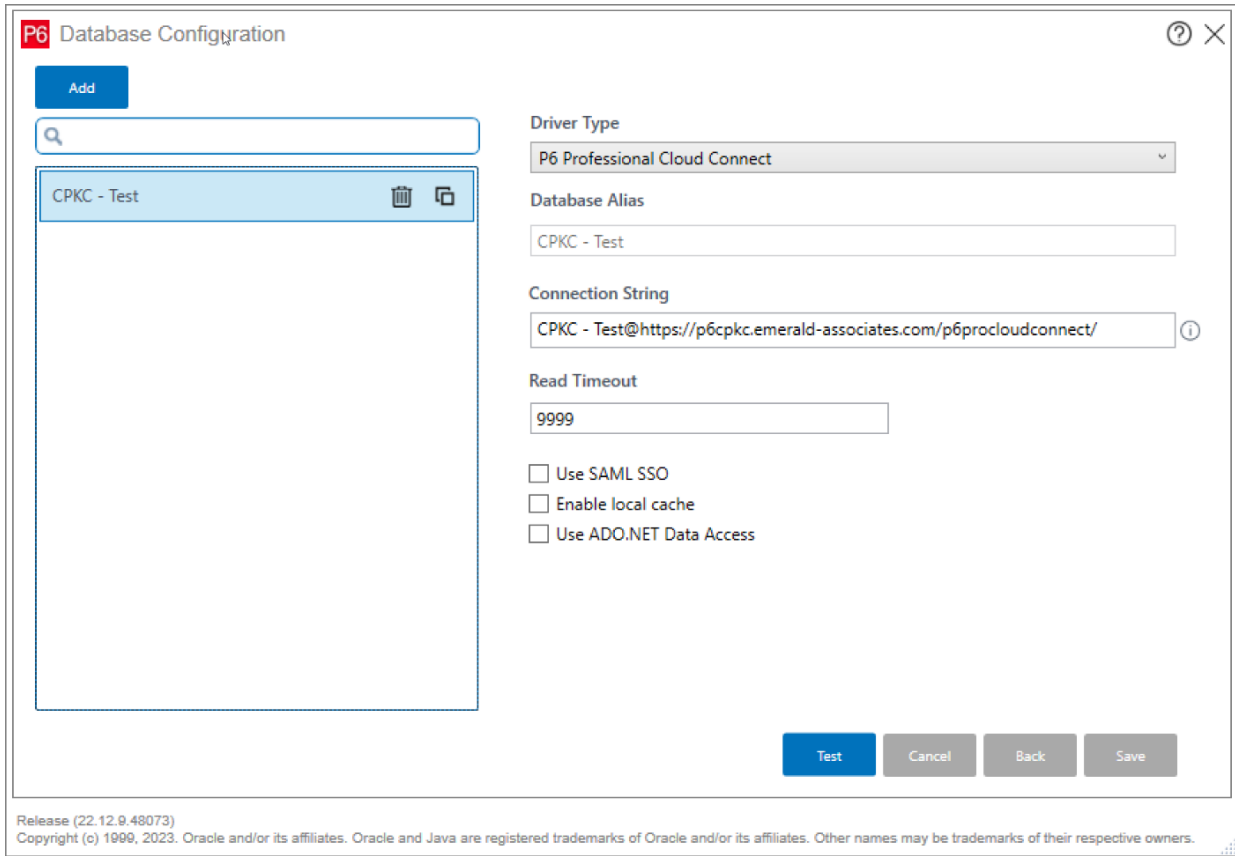
Click window start icon and search for "Database Configuration 22 (x64)", it can be find under the "Oracle - Primavera P6" menu folder.



Click "Add" button.

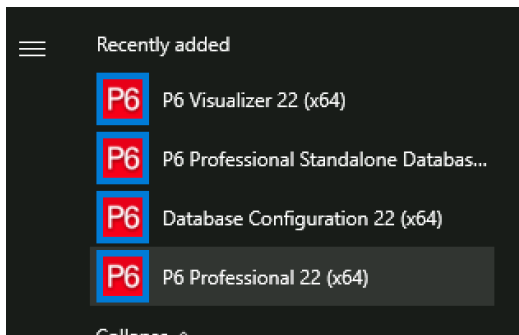
	A	B
1	<b>Database</b>	<b>Connection String</b>
2	CPKC - Test	CPKC - Test@ <a href="https://p6cpkc.emerald-associates.com/p6procloudconnect/">https://p6cpkc.emerald-associates.com/p6procloudconnect/</a>

- 1- Change Driver type to "P6 Professional Cloud Connect"
- 2- Define "Database Alias" using column "Database Alias" on the table below.
- 3- Define "Connection String" using column "Connection String" on the table below.  
(\* ) It needs to exactly how it is on table, including the spaces and case-sensitive.
- 4- Update "Read Timeout" to 9999.
- 5- Uncheck "Use SAML SSO".
- 6- Uncheck "Enable local cache"
- 7- Click "Save"
- 8- Repeat this same procedure for all of the database aliases (if exists).



## Using P6 Primavera

Click window start icon and search for "P6 Professional 22 (x64)", it can be find under the "Oracle - Primavera P6" menu folder.



Login Name

admin

Password

▼ Advanced

Database

CPKC - Test

Language

English (United States)

Connect

Disconnect

[Edit database configuration](#)

Primavera P6 Professional 22 : (No current project)

File Edit View Project Enterprise Tools Help

Projects

Layout: Projects Grouped by Status

Project ID	Project Name	Start	Finish	Data Date	October 2023	November 2023	December 2023	January
BC-Dist-TOD-2011	VAN/BCI - TURNOUT - Dis							
BC-Pickup-Rail-2011	VAN/BCI - Scrap Rail/DTM							
BC-Plate-Shipment-1	VAN/BCI - Plate - Shipment							
AB-Dist-Tie-2011	AB - Ties - Distribution							
AB-Tie-Shipment-201	AB - Ties - Shipment							
AB-Dist-OTM-2011	AB - OTM - Distribution							
AB-Pickup-Rail-2011	AB - Scrap Rail/DTM Picku							
AB-Pickup-Tie-2011	AB - Ties - Pickup							
AB-Dist-TOD-2011	AB - TURNOUT - Distributi							
AB-Plate-Shipment-1	AB - Plate - Shipment							
SK-Dist-Tie-2011	SK - Ties - Distribution							
SK-Tie-Shipment-201	SK - Ties - Shipment							

About Primavera P6 Professional 22

About System

**Primavera P6 Professional 22**  
22.12.9.48073

Copyright © 1999, 2023, Oracle and/or its affiliates.

Oracle and Java are registered trademarks of Oracle and/or its affiliates. Other names may be trademarks of their respective owners.

This software includes third party software code which requires certain notices and disclosures.

To view the list of third party component disclosures related to this product, please see the Commercial Notices and Disclosures document for the release.

This program uses ImageLib Corporate Suite by SkyLine Tools.

Close

General Dates Notebook Budget Log Spending Plan

Project ID: SK-Pickup Tie-2011 Project Name: SK - Ties - Pickup

Status: Active Responsible Manager: TR-ENG Project Leveling Priority: 10

Check Out Status: Checked In Checked Out By: Date Checked Out:

Project Web Site URL: Launch...

Financial Period Calendar: Calendar

Portfolio: All Projects Access Mode: Data Date: 26-Sep-05 Baseline: Current Project Last Job Request: Complete User: admin DB: CPKC - Test (EPPM)